

TOPCASED v4.4 - Installation Guide

Emilien Perico, December 13th 2010

Table of contents

1	Introduction.....	2
1.1	What is TOPCASED ?.....	2
1.2	How to download TOPCASED ?.....	2
1.3	What is the TOPCASED licence ?.....	2
2	Installing TOPCASED - How to ?.....	3
1.1	From an RCP bundle.....	3
1.2	From TOPCASED update-site.....	3
1.3	Custom installation.....	9
1.3.1	Problem with EMF feature installation.....	11
3	Updating TOPCASED.....	12
4	What's next ?.....	15

1 Introduction

1.1 *What is TOPCASED ?*

TOPCASED is an integrated System/Software engineering toolkit compliant with the requirements of critical and embedded applications. It covers the stages from requirements analysis to implementation, as well as some transversal activities like anomaly management, version control, and requirements traceability.

TOPCASED is strongly model-oriented : not only TOPCASED provides model editors, model checkers and model transformations, but is also itself based on modelling and code generation.

TOPCASED is a meta-tool : you can develop your own graphical editors and model transformations using TOPCASED.

1.2 *How to download TOPCASED ?*

You can download the current release of TOPCASED from the following link:
http://topcased.gforge.enseeiht.fr/index.php?idd_projet_pere=52&Itemid=60.

You have two different ways to install TOPCASED :

- We provide **RCP bundles** for each Windows and Linux platforms. This is the easiest way to get quickly a complete installation of TOPCASED with all the needed dependencies.
- You can install TOPCASED from the update site:

<http://topcased-mm.gforge.enseeiht.fr/release/topcased4.2.0/>

From an Eclipse classic 3.6.1 platform, TOPCASED update-site enables to install TOPCASED and its dependencies. It should be helpful if you need to work with a custom platform. Installation steps are described later in this document.

1.3 *What is the TOPCASED licence ?*

TOPCASED is available under an EPL (Eclipse Public licence). You can consult the EPL at <http://www.eclipse.org/org/documents/epl-v10.html>.

2 Installing TOPCASED - How to ?

TOPCASED can be possibly used with any platform running Eclipse 3.6.x and has been tested with : Linux (Ubuntu, GTK+, J2SDK 1.5) and Windows (XP, J2SDK 1.5).

1.1. From an RCP bundle

Let suppose that you have already installed a Java Runtime Environment.

- Download the archive corresponding to your operating system from the link below:

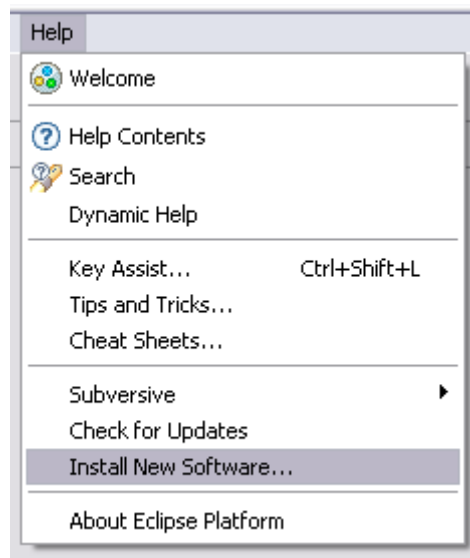
http://topcased.gforge.enseeiht.fr/index.php?idd_projet_pere=52&Itemid=60

- Just unzip into your own location

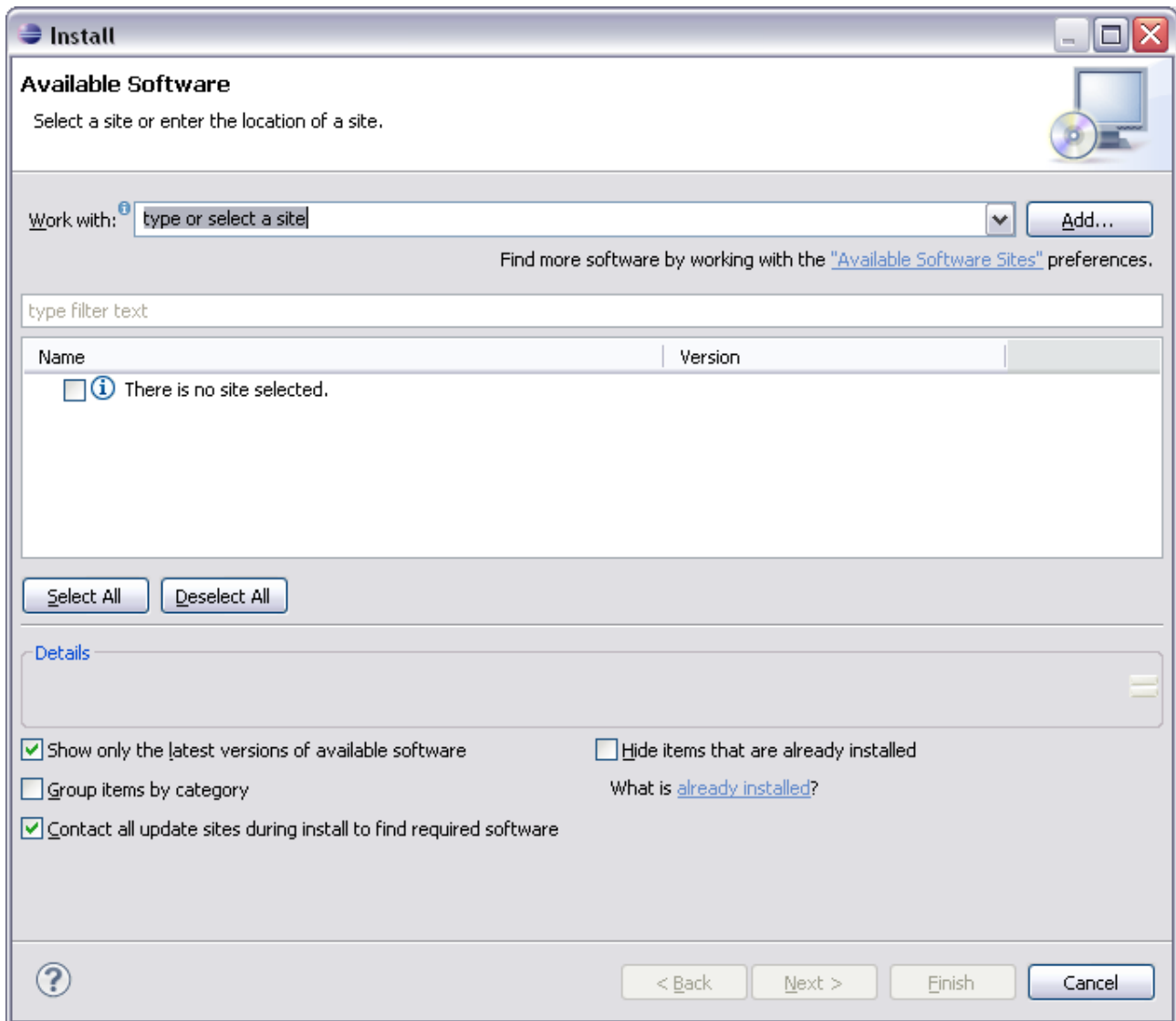
1.2. From TOPCASED update-site

Let suppose that you have Eclipse and a JVM already installed (if you need information about installing Eclipse, please refer to <http://www.eclipse.org>).

- Click on "Help > Install New Software...",

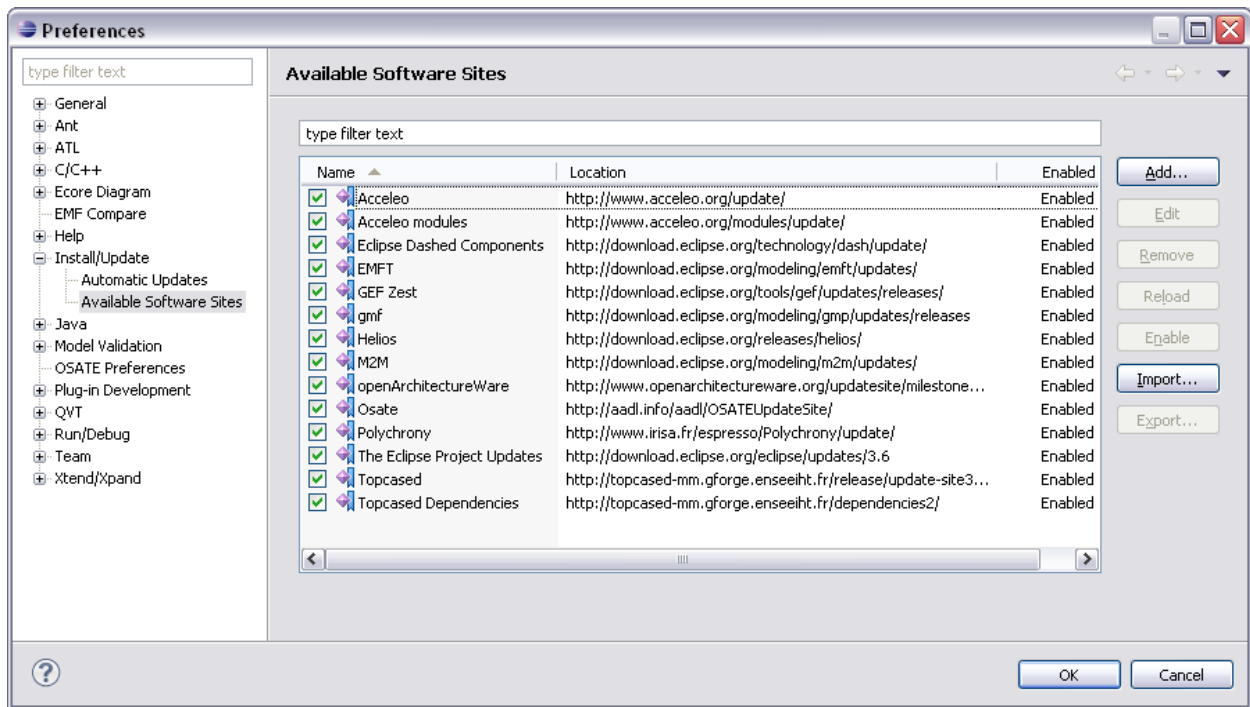


- Go into the "Available Software Sites" page

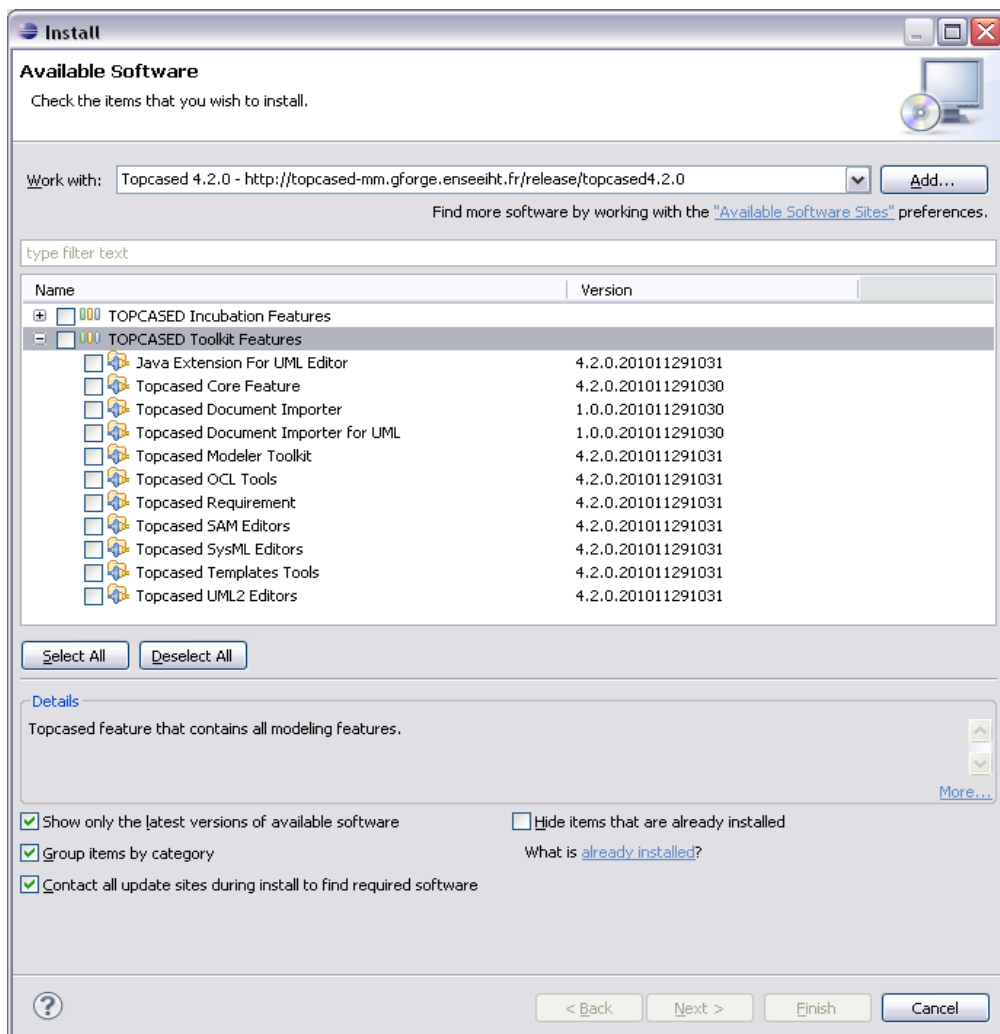


- Select "Import..." and then select the topcasedBookmarks.xml file (http://gforge.enseeiht.fr/scm/viewvc.php/*checkout*/relog/org.topcased.relog/topcasedBookmarks.xml?root=topcased-mm). All the necessary sites are added, just click on "OK" to close the dialog window

Warning: Sometimes after bookmarks import, the Helios update-site is removed. Topcased requires this update-site to perform installation. Please check that the Helios update-site is still available after import step and add it again if needed: Helios - <http://download.eclipse.org/releases/helios>

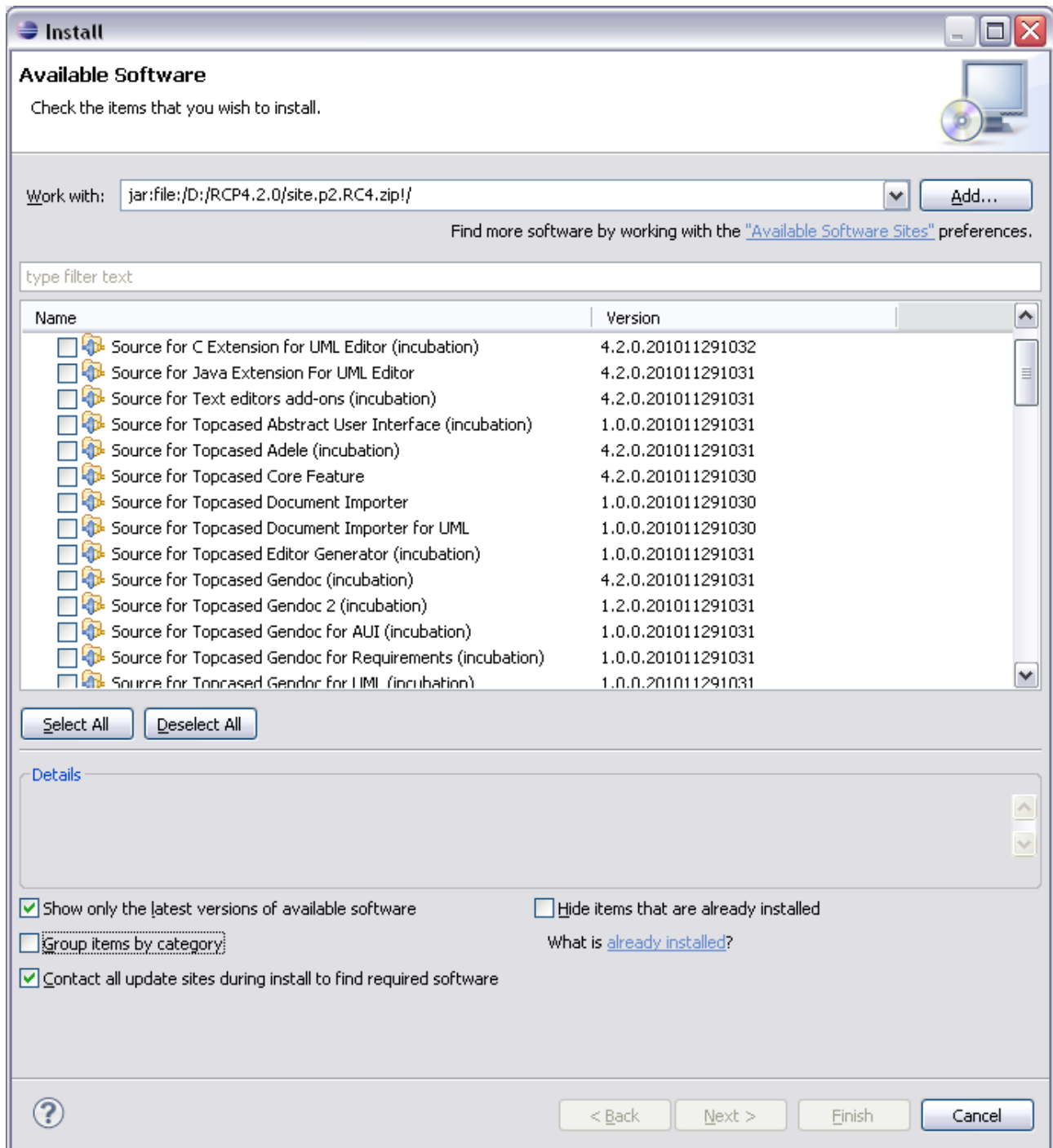


- Then select the TOPCASED update-site. You can now select the features you want to install

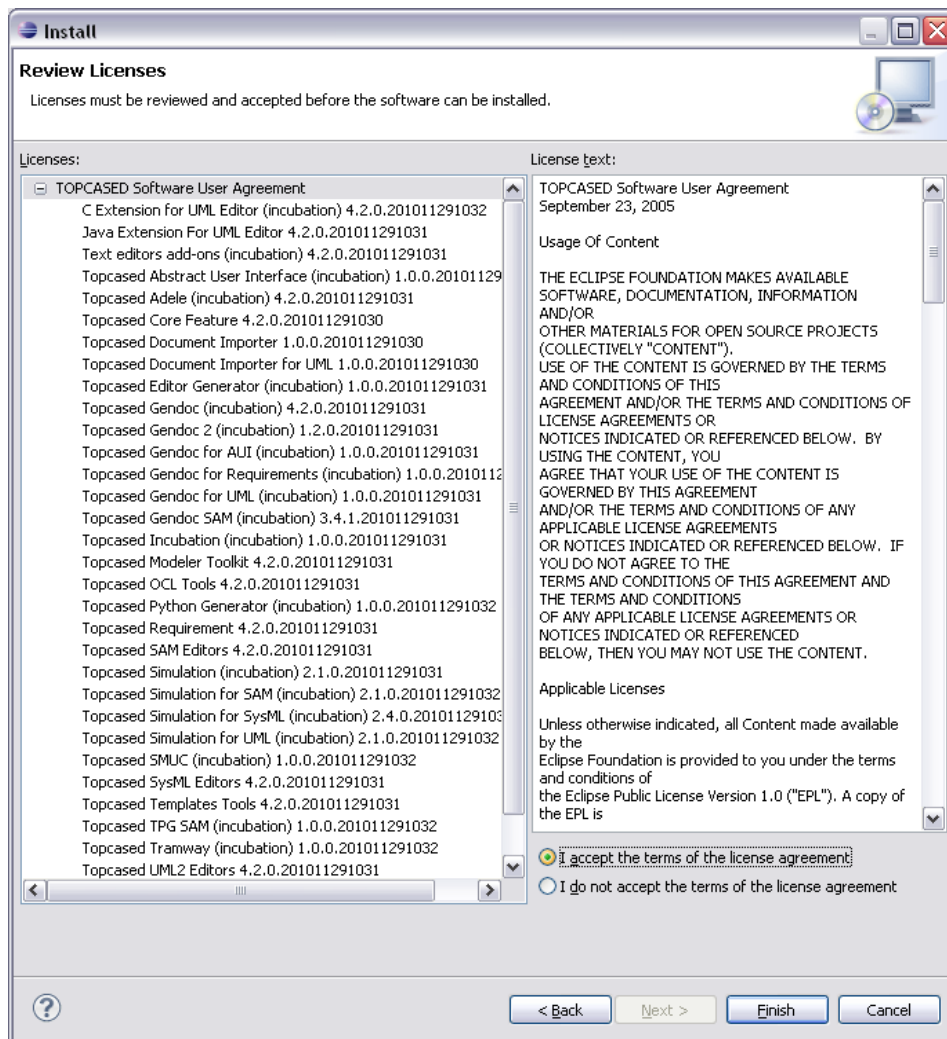


Remark:

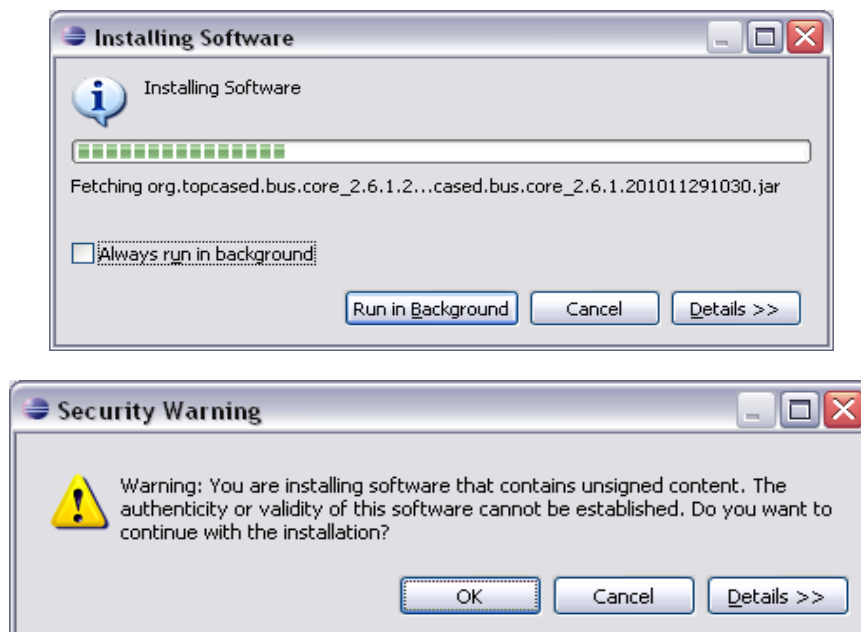
You can disable the option "Group items by category" to highlight features with sources and choose to embed it into your platform.



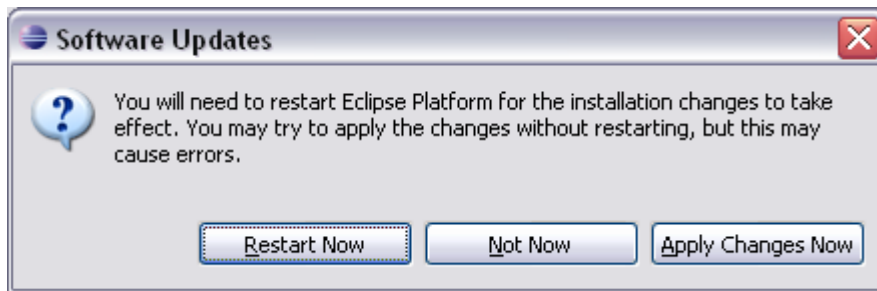
- Then, you can review licenses, you have to "accept the terms of the license agreements" and then click on "Finish"



- During installation, you need to accept the security warning about the unsigned content



- When features are installed, you are invited to restart Eclipse, click on "OK"



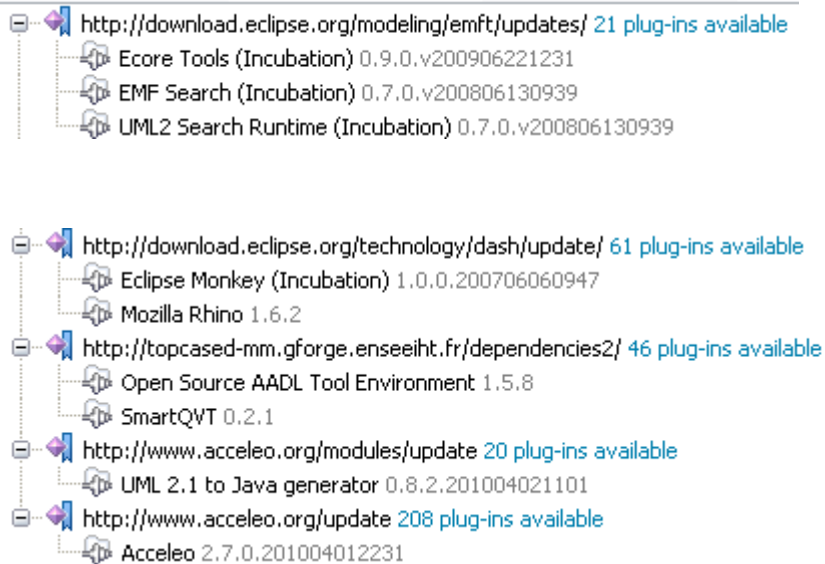
- TOPCASED is now installed.

1.3. Custom installation

If you need to install TOPCASED on your custom Eclipse 3.6.1 platform, here is the list of the required components:

The following components are required :

- JRE or JDK 1.5 (or greater) [the **Sun J2SDK 1.5 is recommended**, see <http://www.eclipse.org/downloads/moreinfo/jre.php> for more informations],



- <http://download.eclipse.org/releases/helios> 235 plug-ins available
- Acceleo 3.0.1.v201009150438
 - Acceleo Runtime 3.0.1.v201009150438
 - ATL - ATLAS Transformation Language 3.1.1.v201009141132
 - C/C++ Development Platform 7.0.1.201009141542
 - C/C++ Development Tools 7.0.1.201009141542
 - Eclipse CVS Client 1.2.0.v20100427-7B77FKt90GE5h05BT5FV9A01911
 - Eclipse Java Development Tools 3.6.1.r361_v20100714-0800-7z8XFU5FLfmgLc5z-Bvrt8-HwKH
 - Eclipse Platform 3.6.1.r361_v20100909-9gF78GrkFqw7GrsZnvz0JWNTeb6fue6896L
 - Eclipse Platform Launchers 3.4.1.R36x_v20100823-7M7K7JF90dnJ-WLF3cf4yi
 - Eclipse Plug-in Development Environment 3.6.1.r361_v20100727-7b7mFL-FET3dhESDgE5_bkJ
 - EMF - Eclipse Modeling Framework Core Runtime 2.6.1.v20100914-1218
 - EMF - Eclipse Modeling Framework Runtime and Tools 2.6.1.v20100914-1218
 - EMF Common 2.6.0.v20100914-1218
 - EMF Common 2.6.0.v20100914-1218
 - EMF Common UI 2.6.0.v20100914-1218
 - EMF Compare 1.1.1.v201009150438
 - EMF Ecore Edit 2.6.0.v20100914-1218
 - EMF Edit 2.6.0.v20100914-1218
 - EMF Edit UI 2.6.0.v20100914-1218
 - EMF Model Converter 2.6.0.v20100914-1218
 - EMF Model Query 1.4.0.v20100428-2315-21827w311A142A1142
 - EMF Model Query OCL Integration 1.4.0.v20100428-2315-3--7w311A232602735
 - EMF Model Transaction 1.4.0.v20100428-2315-377-8s734C3E7D15D6B
 - EMF Model Transaction Workbench Integration 1.4.0.v20100428-2315-36-8s734C367E3CBC7
 - EMF Validation Framework 1.4.0.v20100428-2315-479-9oB56N5BBR6LCA6
 - EMF Validation Framework OCL Integration 1.4.0.v20100428-2315-23-7w3121133502768
 - Graphical Editing Framework Draw2d 3.6.1.v20100908-1100-4507w31211A2403131
 - Graphical Editing Framework GEF 3.6.1.v20100908-1100-777B181A3Bz-6B663E7974242
 - Graphical Editing Framework Zest Visualization Toolkit 1.2.0.v20100519-2050-67808yE5F-8HAH4HECF4242
 - Graphical Modeling Framework (GMF) Notation 1.4.1.v20100909-1000-37708s73533F5C1479I
 - Graphical Modeling Framework (GMF) Runtime 1.4.1.v20100909-1300-7d9A78FYnmMD7VBZOqOghp2tsgXc
 - Graphical Modeling Framework Tooling 2.3.0.v20100421-2359-7c7MFO2FLWU0im8BjQMa9f
 - MWE 2 runtime SDK 1.0.1.v201008251113
 - MWE Core 1.0.0.v201008251122
 - OCL Edit Support 3.0.0.v201005061704-7A--9oB5855K5N8Q5H
 - OCL for Ecore Parser and Interpreter 3.0.1.R30x_v201008251030-79-7I8qD6z-DtD7E6BP9D5393
 - OCL for UML Parser and Interpreter 3.0.0.v201005061704-4--7w312116172815
 - Operational QVT Common 2.1.0.v20100606-1530-7908_AkF7AG8KEM3CMFA
 - Operational QVT Core 3.0.1.v20100818-1530-7B11AkF7AG8VAT3BRLA
 - Operational QVT Runtime 2.1.0.v20100606-1530-7A2-AkF7AG8PBU3BRLA
 - UML2 End-User Features 3.1.1.v201008191505
 - Xpand 1.0.1.v201008251147
 - Xtend 1.0.1.v201008251147
 - Xtend UML2 typesystem 1.0.1.v201008251147
 - Xtext Runtime 1.0.1.v201008251220

Remark: If you plan to use subversion, we suggest using **Subversive**: Update Site is a part of Helios Update Site. Look at Help > Install New Software... > select Helios - <http://download.eclipse.org/releases/helios> > Collaboration Tools

1.3.1. Problem with EMF feature installation

If you try to install TOPCASED into your custom platform, you may not have EMF feature installed, this one is required for TOPCASED.

Since few days, errors occur with EMF feature installation through the update-site. We suggest you to install it first with the local archive available here:

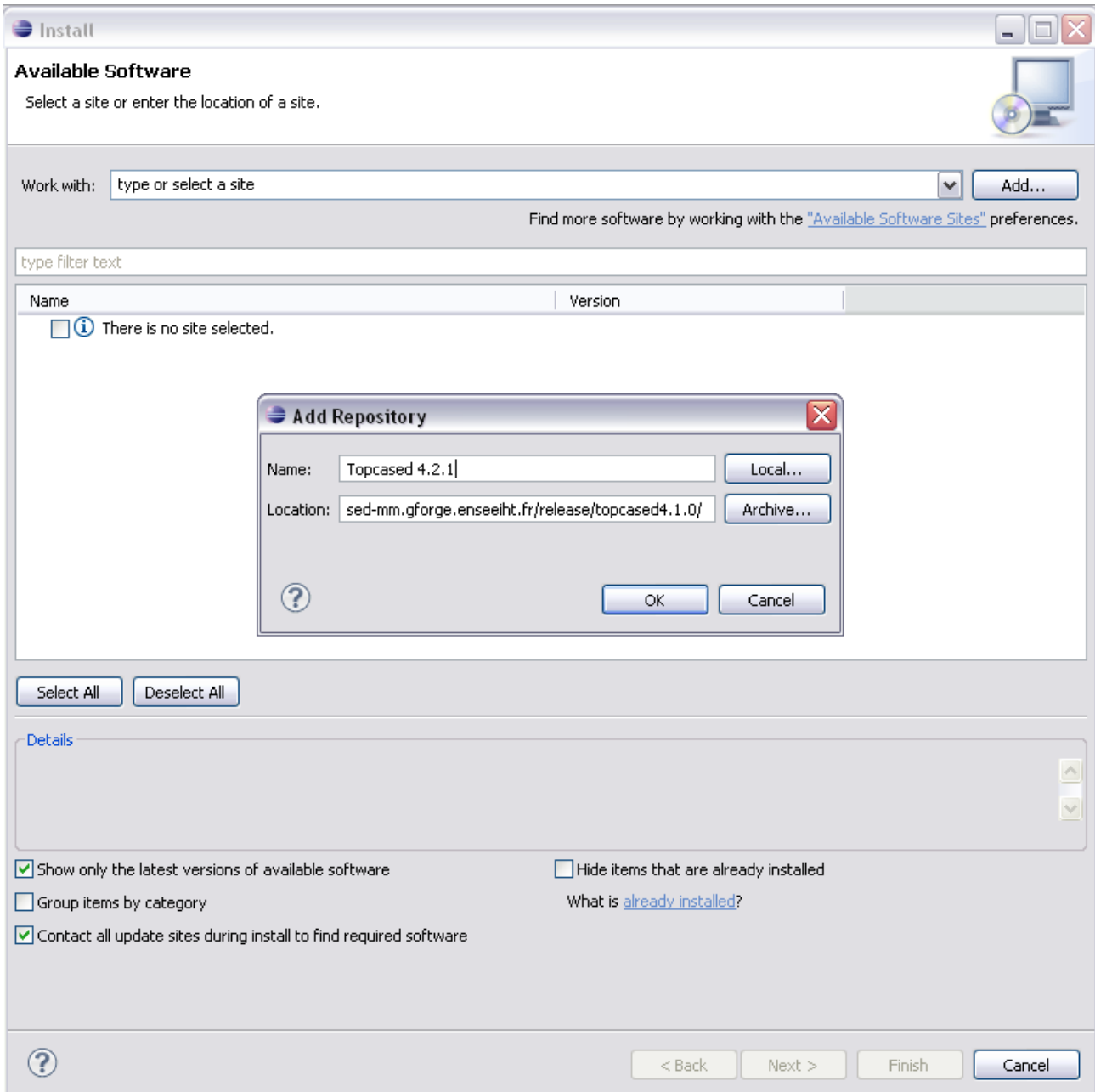
<http://www.eclipse.org/modeling/download.php?file=/modeling/emf/emf/downloads/drops/2.6.x/R201009141218/emf-runtime-2.6.1.zip>

Next, you will be able to perform TOPCASED installation.

3 Updating TOPCASED

When a new TOPCASED version is available, you are able to update your platform through the update-site. You can see below how to update your platform:

First, you need to add the update-site of the new TOPCASED release in the Eclipse software updates:



Then the software update analyses the new site and show the available updates:

type filter text

Name	Version
<input type="checkbox"/> Topcased Modeler Toolkit	4.2.1.201012131753
<input type="checkbox"/> Topcased UML2 Editors	4.2.1.201012131753

Select All Deselect All

Details

Topcased Modeler Toolkit is a required feature for all modeling capabilities. [More...](#)

Show only the latest versions of available software Hide items that are already installed
 Group items by category What is [already installed?](#)
 Contact all update sites during install to find required software

The installation process informs you that some features will be updated

Install

Install Details

Your original request has been modified. See the details.

Name	Version	Id
Topcased Modeler Toolkit	4.2.1.20101213...	org.topcased.modeler.toolkit.feature...
Topcased UML2 Editors	4.2.1.20101213...	org.topcased.uml.feature.group

Size: Unknown

Details

Your original request has been modified.
"Topcased Modeler Toolkit" is already installed, so an update will be performed instead.
"Topcased UML2 Editors" is already installed, so an update will be performed instead.

You can click to the next step and perform the update. Your TOPCASED platform is now updated to the new release version.

4 What's next ?

You should refer to the **documentation** available from the Eclipse help system : in "*Help > Help contents*"

If you **find a bug**, or if you are thinking to an improvement of the toolset, please fill a bug/feature request report at

http://gforge.enseeiht.fr/tracker/?group_id=52.

If you are not yet registered, you will have to create an account here : <http://gforge.enseeiht.fr/account/register.php>.

A **mailing list** dedicated to the Topcased users is also available. Please send your questions to this list. You can subscribe at

<http://lists.gforge.enseeiht.fr/mailman/listinfo/topcased-users>.

It is also possible to **download the sources** from our CVS server using an anonymous account. To do so, please refer to

<http://gforge.enseeiht.fr/scm/viewvc.php/relog/org.topcased.relog/psf/?root=topcased-mm>

where are maintained some Team Project Set files used to quickly set up your workspace (see <http://help.eclipse.org/ganymede/index.jsp?topic=/org.eclipse.platform.doc.user/tasks/tasks-cvs-project-set.htm> for more information on how to import these files).

How to contribute ? Have a look at informations present in the Development Guidelines page (http://topcased.gforge.enseeiht.fr/index.php?option=com_content&task=view&id=45).

We plan to release a new version every 8 weeks : keep an eye on our **website** <http://www.topcased.org>.